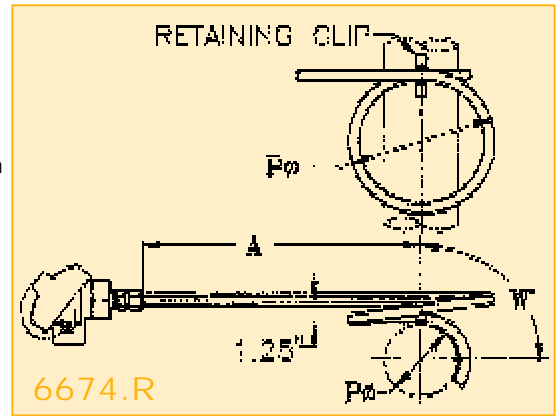


6674.L

"Tube Temp"

- "Knife-Edge" thermojunction
- More accurate than pad type thermocouple
- Most commonly used design with expansion loop
- Ideal for applications where tube movement is greater than 3"
- Best value for accuracy and longevity
- Wrap around angle 90° "W"
- Retaining clip furnished, clip material matches sheath material
- HD 0.0125 (3.17mm) wall thickness



6674.R

6674

Code	
L	Left
R	Right

Code	Wire calibration
E	Chromel / Constantan
J	Iron / Constantan
K	Chromel / Alumel
EE	Duplex Chromel / Constantan
JJ	Duplex Iron / Constantan
KK	Duplex Chromel / Alumel

Length "A"
Specify "A" dimension in inches (above) if metric add "mm" after dimension

Code	Loop size Diameter
1P	1x pipe Ø
2P	2x pipe Ø

Heater tube "P"
Specify "P" dimension in inches. Actual tube outside diameter is required. (3.5" min.)

Code	Wrap around angle "W"
90	90° (Standard)

Specify other angles in degrees

Code	Other pertinent data
0	None
999	Special consult factory

Code	Spring loaded cover plate
0	None
S809	Spring loaded

None is standard

Code	Head
0	None
CI	Cast Iron
AL	Aluminium

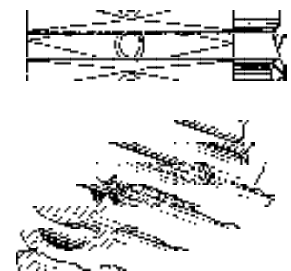
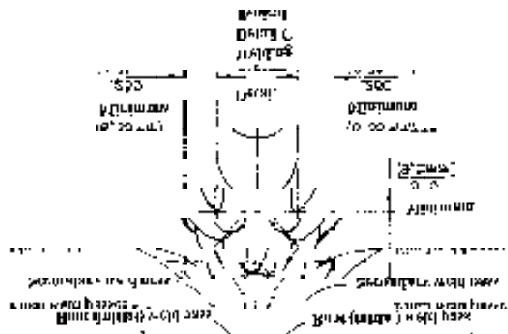
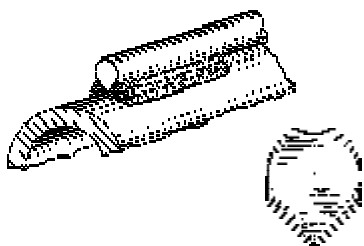
Cast Iron is standard

Code	Sheath material
310ST	310 St. St. Standard
310HD	310 Heavy duty
446ST	446 St. St. Standard
446HD	446 Heavy Duty
HAX	Hastelloy X
446ST	St. St. is standard

Code	Junction Style
G	Grounded junction
U	Ungrounded junction

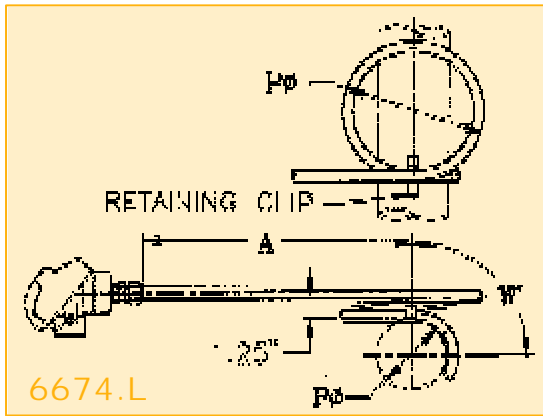
Grounded junction is standard

Examples of different configurations available



Standard Knife Edge configuration

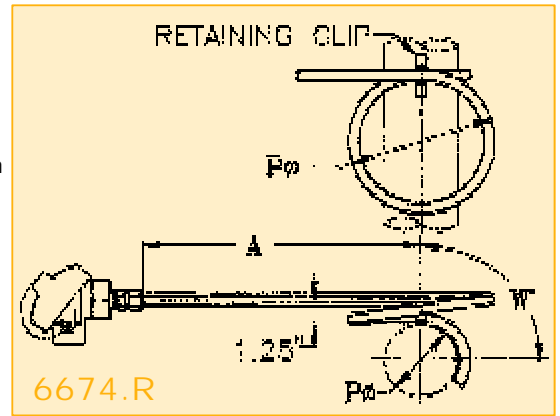
Custom diamond shape



6674.L

"Tube Temp"

- "Knife-Edge" thermojunction
- More accurate than pad type thermocouple
- Most commonly used design with expansion loop
- Ideal for applications where tube movement is greater than 3"
- Best value for accuracy and longevity
- Wrap around angle 90° "W"
- Retaining clip furnished, clip material matches sheath material
- HD 0.0125 (3.17mm) wall thickness



6674.R

6674

Code	
L	Left
R	Right

Code	Wire calibration
E	Chromel / Constantan
J	Iron / Constantan
K	Chromel / Alumel
EE	Duplex Chromel / Constantan
JJ	Duplex Iron / Constantan
KK	Duplex Chromel / Alumel

Length "A"
Specify "A" dimension in inches (above) if metric add "mm" after dimension

Code	Loop size Diameter
1P	1x pipe Ø
2P	2x pipe Ø

Heater tube "P"
Specify "P" dimension in inches. Actual tube outside diameter is required. (3.5" min.)

Code	Wrap around angle "W"
90	90° (Standard)

Specify other angles in degrees

Code	Other pertinent data
0	None
999	Special consult factory

Code	Spring loaded cover plate
0	None
S809	Spring loaded

None is standard

Code	Head
0	None
CI	Cast Iron
AL	Aluminium

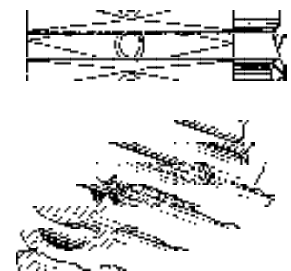
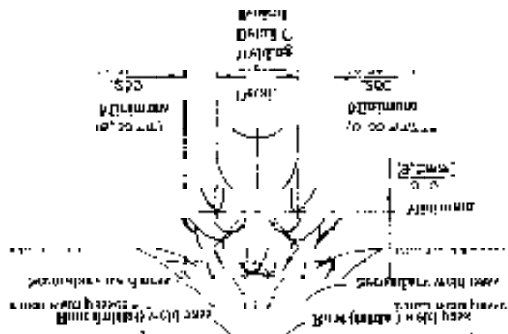
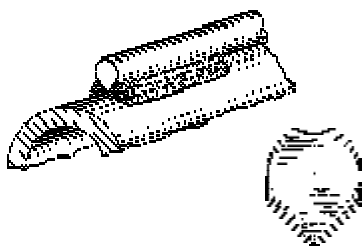
Cast Iron is standard

Code	Sheath material
310ST	310 St. St. Standard
310HD	310 Heavy duty
446ST	446 St. St. Standard
446HD	446 Heavy Duty
HAX	Hastelloy X
446ST	St. St. is standard

Code	Junction Style
G	Grounded junction
U	Ungrounded junction

Grounded junction is standard

Examples of different configurations available



Standard Knife Edge configuration

Custom diamond shape